

# F18 - TRAINING CAP A/A

## OBJECTIFS PRIORITAIRES

Décollage en formation  
Tenue de formation (Echelon droite)  
Regroupement au Hold  
Hold main droite 25000 ft

## **CAP**

27000 ft – Mach 0.75 – Trail 10nm / Grinder + Line Abreast en fonction du nb de pilotes  
Ne pas dépasser le point de CAP (WPT 3) – SA 15 à proximité

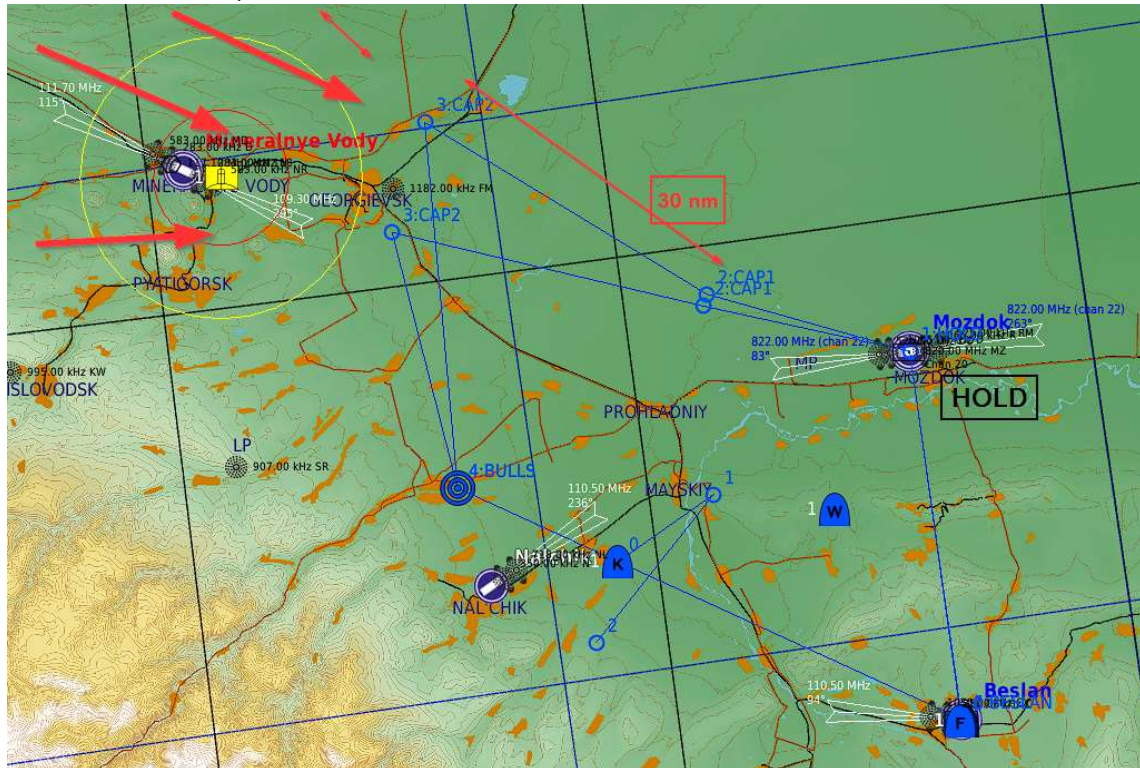
## OBJECTIFS SECONDAIRES

Utilisation Yardstick  
Arrivée au break

Décollage de Beslan en 09 (besoin de faire demi-tour en bout de piste)

TKR – 13Y – 253.00 – 28000

Beslan – 141.00 – 09/27



**Yardstick**



**Tacan 1-63 X or Y**  
A/A  
T/R

**Tacan Lead's freq + 63**  
A/A  
T/R

**Tacan Lead's freq + 63**  
A/A  
T/R

This diagram illustrates the Tacan 1-63 X or Y configuration. It features a central aircraft icon with the text "Tacan 1-63 X or Y", "A/A", and "T/R" to its right. Below this, two smaller aircraft icons are positioned on the left and right, each with the text "Tacan Lead's freq + 63", "A/A", and "T/R" next to it.



**Tacan 1Y**

**Tacan 64Y**

**Tacan 64Y**

This diagram illustrates the Tacan 1Y configuration. It features a central aircraft icon with the text "Tacan 1Y" to its right. Below this, two smaller aircraft icons are positioned on the left and right, each with the text "Tacan 64Y" next to it.